

**Can I understand physical  
features of Australia?**

## **Fast Five - answers are on the next slide**

- 1) What continent is Australia in?
- 2) What is one example of human features that influences settlements?
- 3) What is one example of physical features that influences settlements?
- 4) What continent is India in?
- 5) What language is spoken in Australia?

# Fast Five - answers

- 1) What continent is Australia in? **Oceania**
- 2) What is one example of human features that influences settlements?  
**transport links, access to shops, access to medical care, population size**
- 3) What is one example of physical features that influences settlements?  
**fertile land, climate zone, water sources, harshness of local environment**
- 4) What continent is India in? **Asia**
- 5) What language is spoken in Australia? **English**



# AUSTRALIA



# The Great Barrier Reef

- The Great Barrier Reef is the world's largest coral reef system and is listed of the Seven Natural Wonders of the World on the UNESCO World Heritage Site.
- This coral reef system consists of 2,900 individual reefs, 900 islands and covers 344,400 square kilometres.
- It is located in the coral sea, north-east coast of Queensland, Australia.
- The Great Barrier Reef stretches over 2600 km and it is between 15 km and 150 km from shore. The width of the reef is up to 65 km.
- The Great Barrier Reef is home to a wide range of life, including over 1500 different species of fish, sea turtles, giant clam, seahorse, sea snakes, nudibranch, sea turtles, stingray, sharks, whales, dolphins and many more.

# What impact does The Great Barrier Reef have.

- The Great Barrier Reef attracts 2 million tourists every year.
- This gives the Great Barrier Reef a huge value to Australia (it contributes \$6.4 billion to Australia's wealth each year).
- It also provides 64,000 jobs.
- This means the area is very busy. We already know this from the last lesson on Australia when we found out that this area was densely populated.
- Watch this video to see the Great Barrier Reef

<https://safeYouTube.net/w/UvIK>



The reef extends from north of **Torres Strait**, between the south of Lady Elliot and the **Fraser Islands**.



Increased greenhouse gases from human activities result in climate change and ocean acidification.

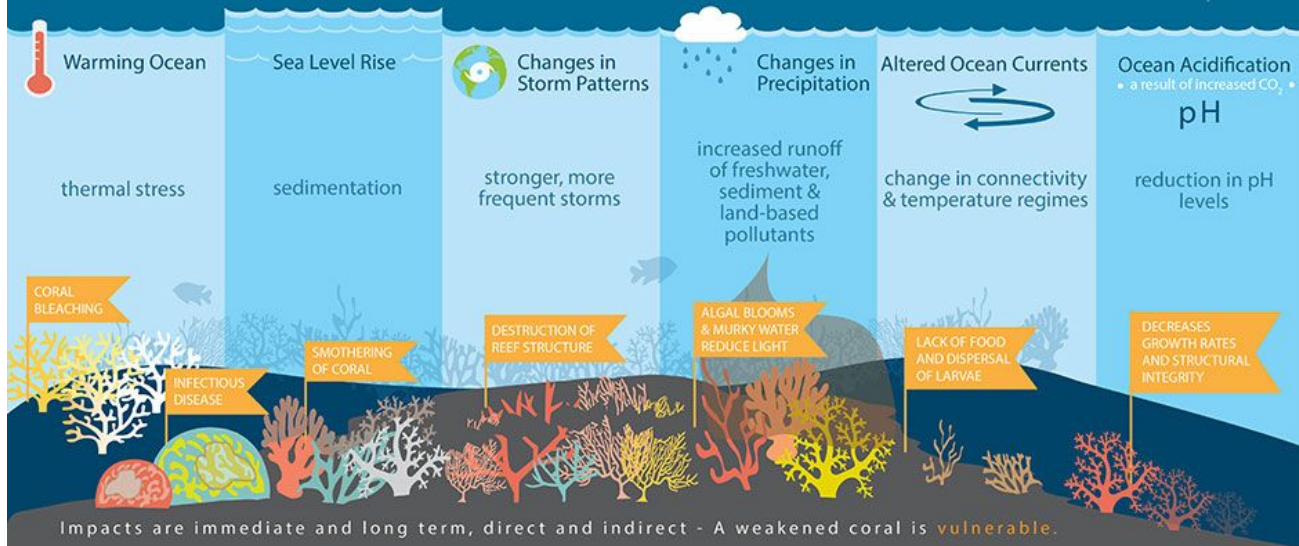
CLIMATE CHANGE = OCEAN CHANGE



CO<sub>2</sub>

The world's ocean is a massive sink that absorbs carbon dioxide (CO<sub>2</sub>). Although this has slowed global warming, it is also changing ocean chemistry.

CLIMATE CHANGE dramatically affects CORAL REEF ECOSYSTEMS



Spend a few minutes really looking at this diagram in detail and having a think about what this might mean for The Great Barrier Reef and Australia as whole. If you need to see it clearer it can be found at the following link.

<https://oceanservice.noaa.gov/facts/coralreef-climate.html>



# If The Great Barrier Reef was to become extinct, how would it impact Australia?

Many people feel The Great Barrier Reef makes Australia great. It brings 2 million tourists a year and lots of money to the country. If there wasn't such a large tourist attraction there, what do you think might happen?

- Would people still visit Australia?
- There would be 64,000 less jobs: what would that mean for people living there?
- Would people want to live there?
- How would it impact population density?

# Barren land

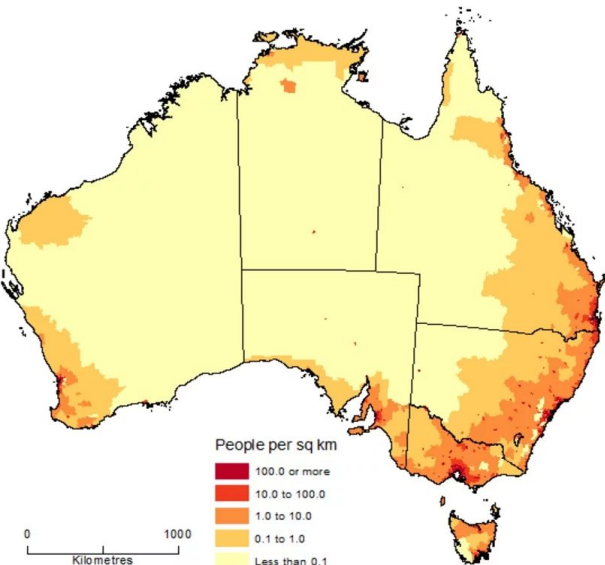
35% of Australia is barren land, which means these areas are inhabitable. They are unable to grow crops, there is limited (if any) access to water sources and almost no transport links to main areas. We looked at the extent of barren land in the lesson on Australia.

Explore Australia's barren land here:

<https://earth.google.com/web/@-23.33599849,133.56031122,258.19248379a,1533461.70581549d,35y,0h,0t,0r>

If you look at the first map, you can see the light yellow areas have less than one person per square metre. You can see in the second and third picture that this is because it is dry and hot and has limited water sources: there are only small lakes but not rivers running through.

POPULATION DENSITY BY SA2, Australia - June 2016



# How does the large amount of barren land impact on Australia?

The amount barren land in Australia really limits where people can live, which is why it's so busy on the coastal areas.

How do you think the barren land impacts on Australia?

- Is it more difficult to build there and why?
- Does it limit jobs?
- Does it affect people wanting to live there?

**Your Task** - Choose the Great Barrier Reef or the barren land in Australia and create a poster providing facts about either one to inform people who are considering living there. Think about the pros and cons of each area and what will impact people's decisions.

**Red** - Use the facts given to help you create your poster.

**Yellow** - Use the prompting questions to help you create your poster.

**Green** - Create your poster. You can use the information from this slide to remind you of facts.

**Remember - if you're proud of the poster you create, we would love to see it! Please email it to [year5@monkwickjunior.school](mailto:year5@monkwickjunior.school)**