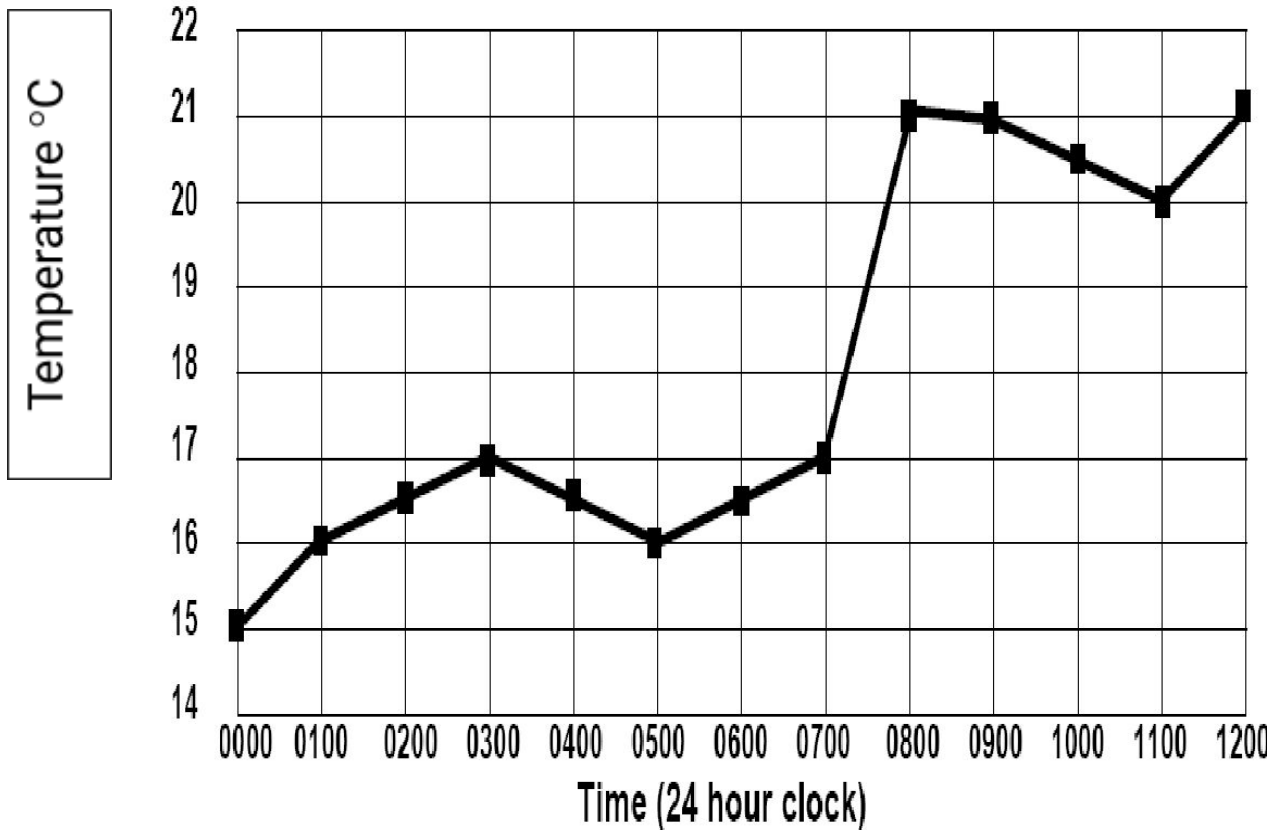


## Year 4 Week 9 Lesson 4 Questions

Can I interpret a line graph?

**RED**

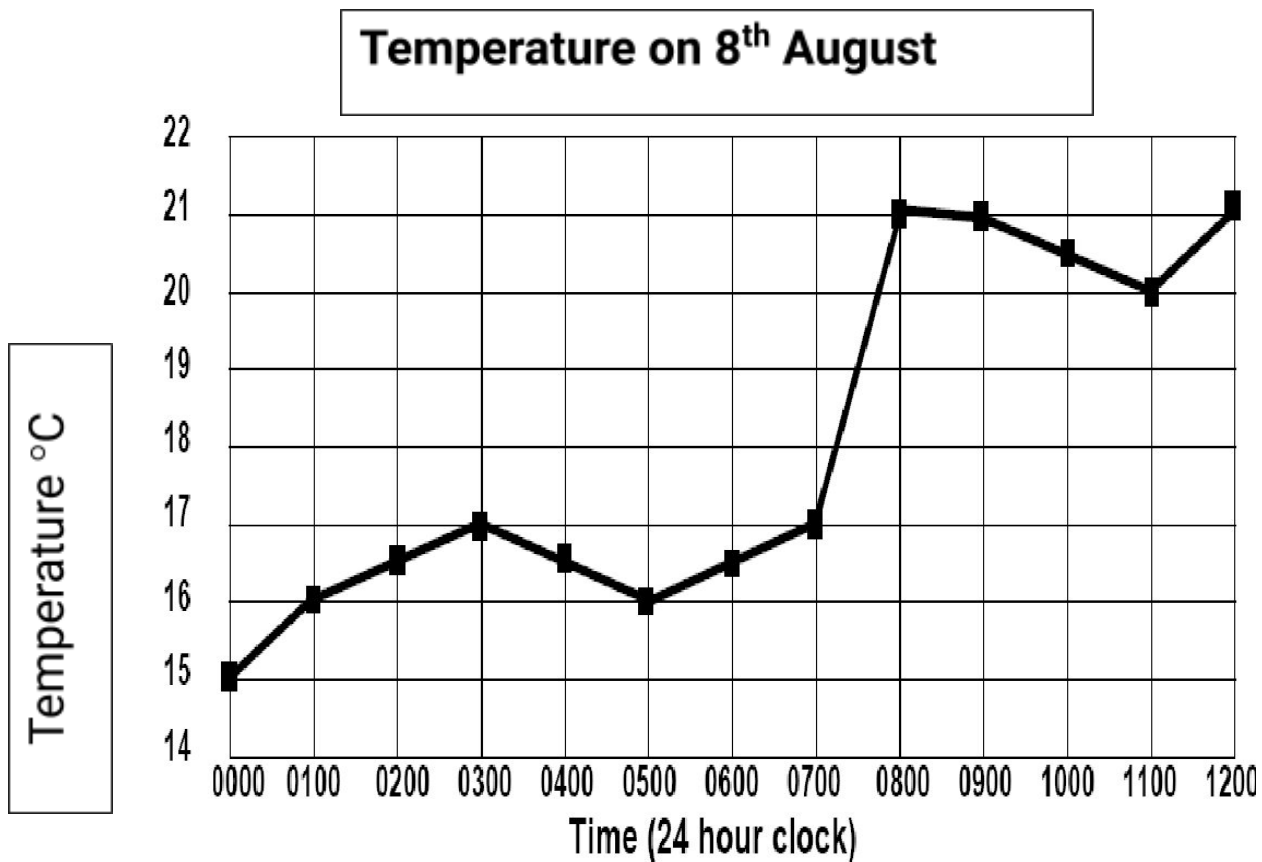
Temperature on 8<sup>th</sup> August



1. What was the temperature at 01:00?
2. At what time was it 20°C?
3. At what time was it coolest?
4. At what times was it warmest?
5. At what times was it 16°C
6. What is the difference between the temperature at 03:00 and 05:00?
7. Can you think of any questions of your own?

## Can I interpret a line graph?

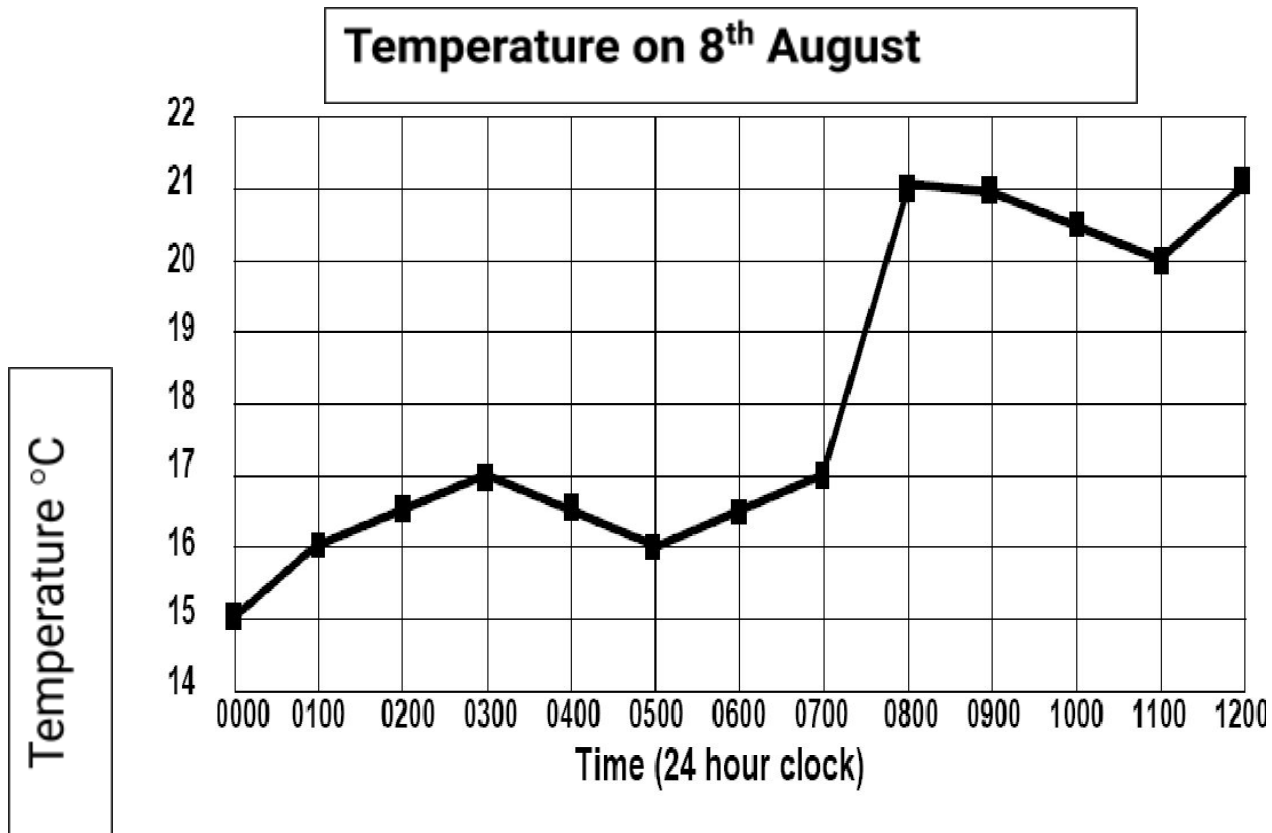
**YELLOW**



1. At what times was it warmest?
2. When was it 16°C
3. What was the difference between the temperature at 03:00 and 05:00?
4. What was the temperature at 10:00?
5. What was the difference between the temperature at 02:00 and at 10:00?
6. What was the temperature difference between the coolest time of the day and the warmest time of the day?
7. Can you think of any questions of your own?

## Can I interpret a line graph?

**GREEN**



1. What was the temperature at 11:00?
2. What was the difference between the temperature at 01:00 and at 09:00?
3. What was the temperature difference between the coolest time of the day and the warmest time of the day?
4. At what times of the day was the temperature 17°C?
5. Between which times did the temperature increase the most?
6. From 00:00, how long did it take for the temperature to reach 21°C?
7. Can you think of any questions of your own?