

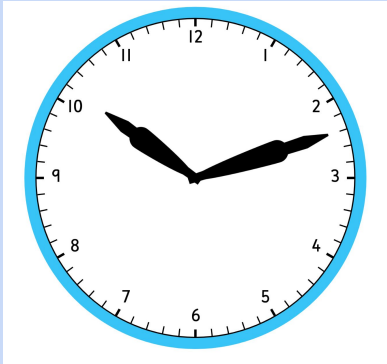
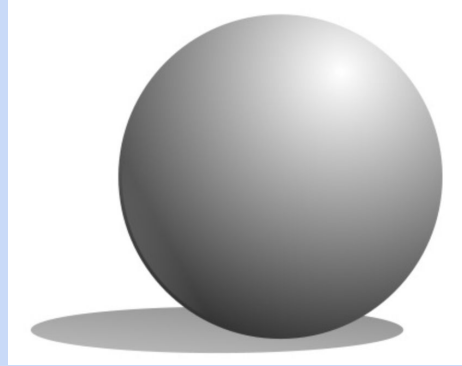
Can I add a 2 digit number to a 2 digit number?

Video link: <https://www.youtube.com/watch?v=xMf4AifvOIO>

Double 22

Name this 3D shape.

$$40 + _ = 100$$



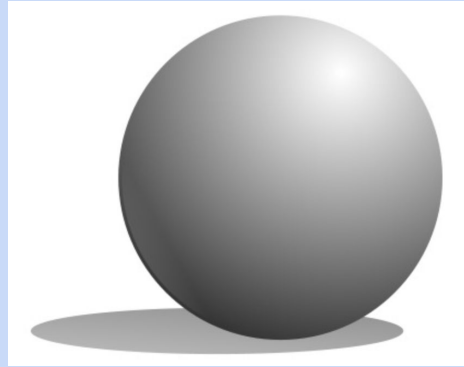
$$70\text{ml} + 50\text{ml}$$

Answers on next slide

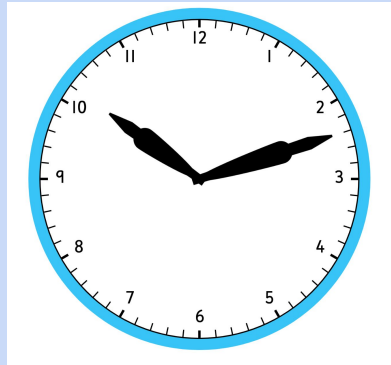
Double 22

44

$$40 + 60 = 100$$



sphere



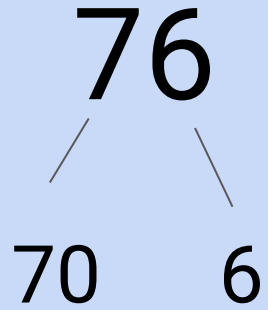
12 minutes past 10

$$70\text{ml} + 50\text{ml}$$

120ml

Can I add a 2 digit number to a 2 digit number?

Partitioning review:



42

37

91

Can I add a 2 digit number to a 2 digit number?

1) *Partition your tens and write down the addition sum for the tens*

$$76 + 58$$

2) *Partition your ones and write down the addition sum for the ones*

Can I add a 2 digit number to a 2 digit number?

- 1) *Partition your tens and write down the addition sum for the tens*

The diagram illustrates the partitioning of the addition $76 + 58$. The number 76 is split into 70 (tens) and 6 (ones), and 58 is split into 50 (tens) and 8 (ones). Lines connect the tens digits to their respective sums: a purple line from 7 to 70, a purple line from 5 to 50, a blue line from 6 to 6, and a blue line from 8 to 8. The plus sign and the numbers 6 and 8 are also blue.

$$76 + 58$$
$$70 + 50 \quad 6 + 8$$

- 2) *Partition your ones and write down the addition sum for the ones*

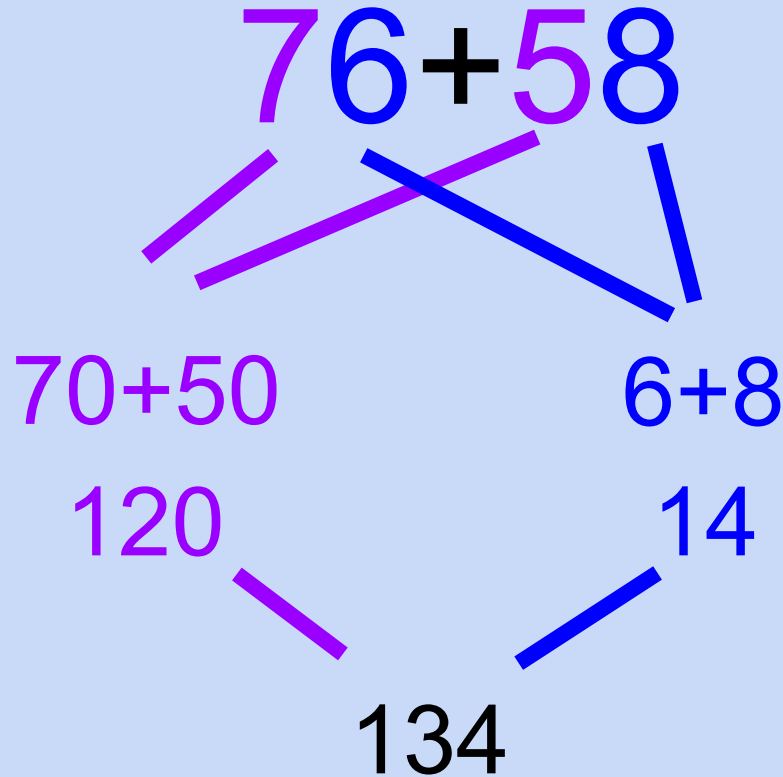
Can I add a 2 digit number to a 2 digit number?

$$\begin{array}{r} 76 + 58 \\ \hline 70 + 50 \quad 6 + 8 \\ 120 \quad 14 \end{array}$$

The diagram illustrates the decomposition of the addition problem $76 + 58$. The number 76 is split into 70 and 6, and 58 is split into 50 and 8. Lines connect 70 to 70+50, 50 to 70+50, 6 to 6+8, and 8 to 6+8. Below 70+50 is the partial sum 120, and below 6+8 is the partial sum 14.

4) Solve the addition sums
for the tens and ones

Can I add a 2 digit number to a 2 digit number?



5) Add them back together
(see the next slide for
strategies to make this
easier).

Can I add a 2 digit number to a 2 digit number?

$$120 + 14$$

$$120 + 10 = 130$$

$$130 + 4 = 134$$

Break it down into two steps.
When adding tens, only the
tens column changes.

$$\begin{array}{r} 120 \\ + 14 \\ \hline 134 \end{array}$$

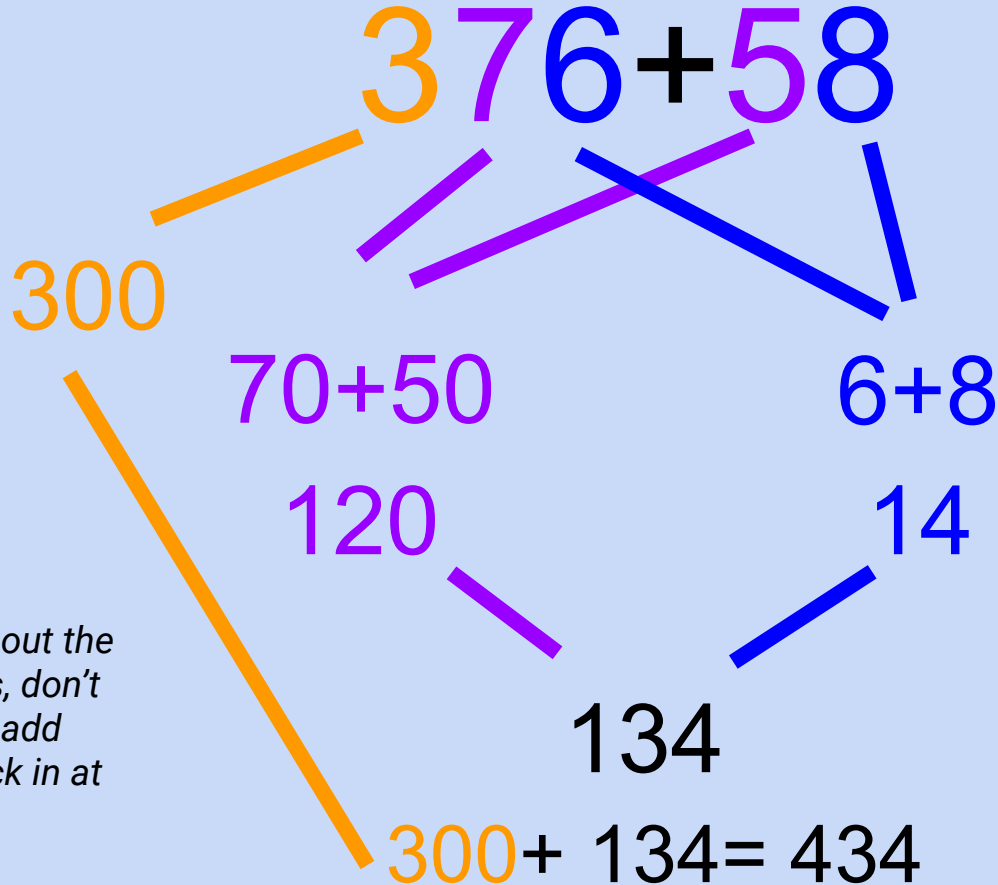
Lay out using the column method, make sure you line up the tens and ones correctly. Start by adding the ones first, then tens and hundreds.

Can I add a 2 digit number to a 2 digit number?

$$34 + 89$$

Can I add a 3 digit number to a 2 digit number?

Green Challenge



- 1) *Partition out the hundreds, don't forget to add them back in at the end!*