

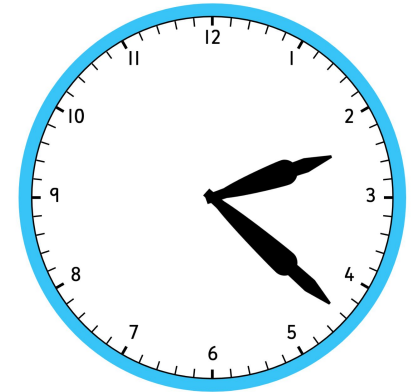
Fast Five

$93-27=$

	2	3	7
-	1	1	4
	<hr/>		
	<hr/>		

$770\text{ml} + 20\text{ml}$

$45 \div 5 =$



What time is it?

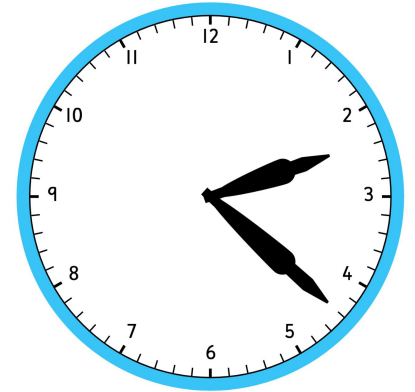
Answers on the next slide

Fast Five

$$93 - 27 = 66$$

	2	3	7
-	1	1	4
	1	2	3

$$45 \div 5 = 9$$



22 minutes past 2

$$770\text{ml} + 20\text{ml} = 790\text{ml}$$

Answers on the next slide

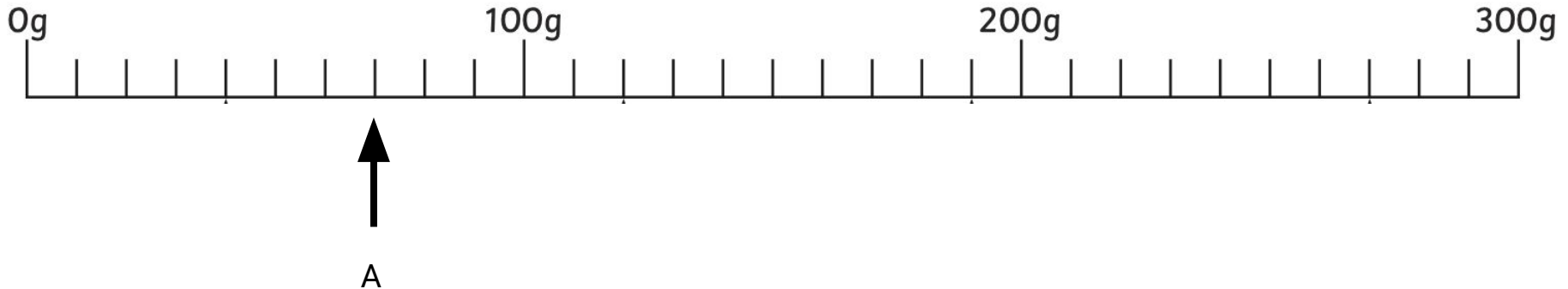
Can I read scales?

- 1) *Most scales go up in increments or 'jumps' of 1, 2, 5, 10, 20, 25, 50, or 100.*

Pick one of these to test and see if it works.

Start from 0 counting up in the jumps. If you've picked the right one, you will get to 100 when you reach the 100g line.

If you've picked something too big or too small, adjust and try again.



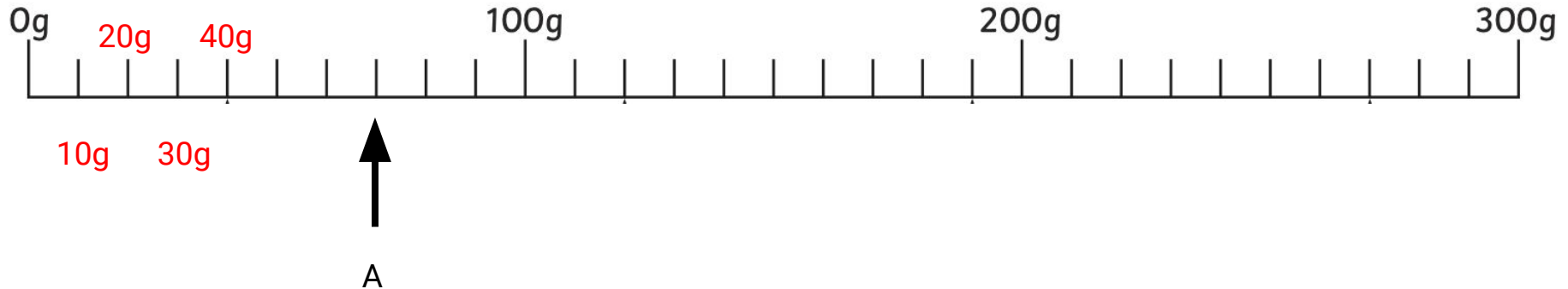
Can I read scales?

1) *Most scales go up in increments or 'jumps' of 1, 2, 5, 10, 20, 25, 50, or 100.*

Pick one of these to test and see if it works.

2) *5 was too small, 20 was too big, this scale is going up in 10s.*

3) *Now count up to find the amount the arrow is pointing to.*



Can I read scales?

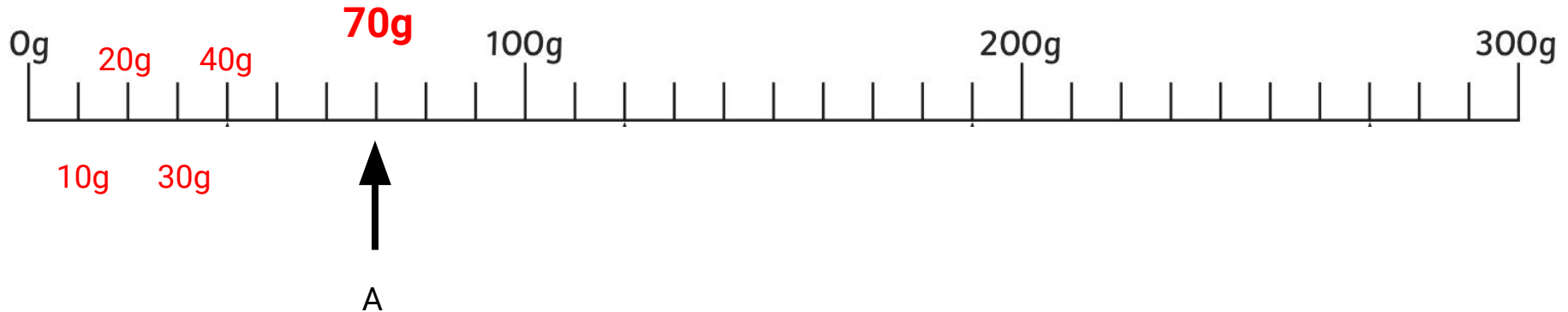
1) Most scales go up in increments or 'jumps' of 1, 2, 5, 10, 20, 25, 50, or 100.

Pick one of these to test and see if it works.

2) *5 was too small, 20 was too big, this scale is going up in 10s.*

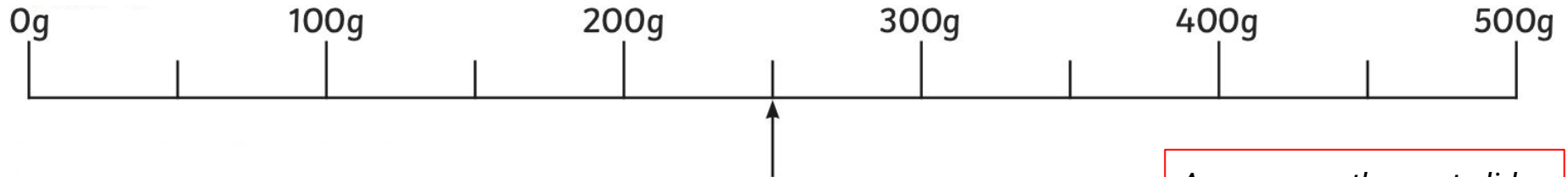
3) Now count up to find the amount the arrow is pointing to.

There arrow is pointing to 70g.



Can I read scales?

Now try this one, remember most scales go up in increments or 'jumps' of 1, 2, 5, 10, 20, 25, 50, or 100.



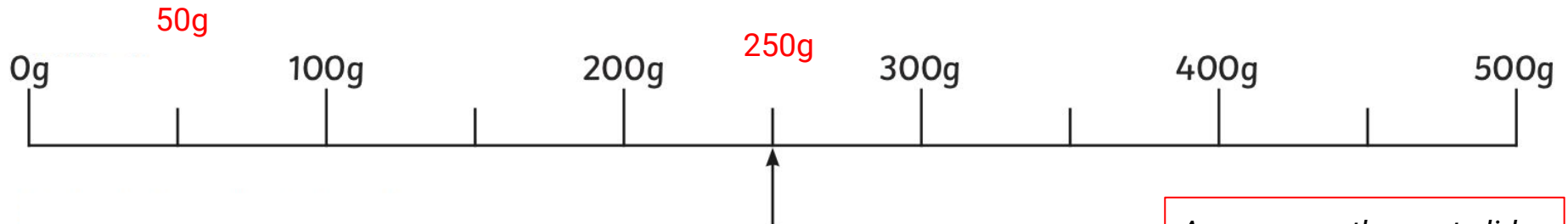
Answers on the next slide

Can I read scales?

This scale is going up in jumps of 50.

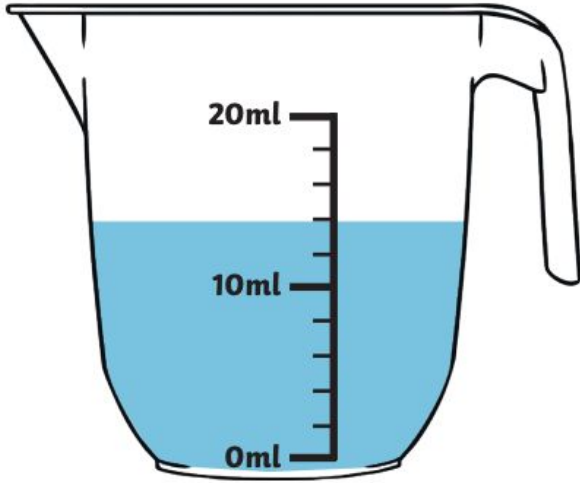
The arrow is pointing to 250g.

Now try this one, remember most scales go up in increments or 'jumps' of 1, 2, 5, 10, 20, 25, 50, or 100.



Answers on the next slide

Can I read scales?

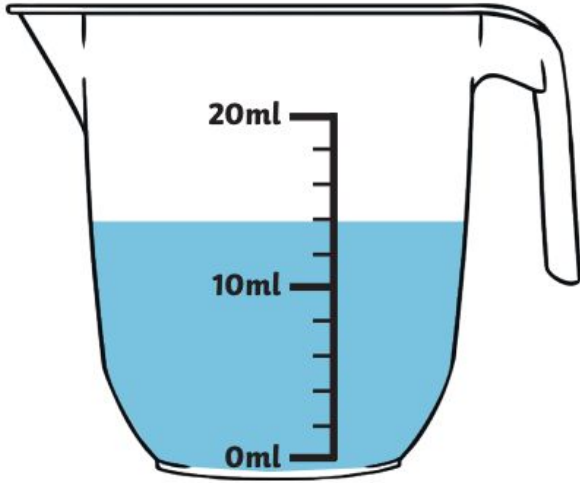


- 1) *Some scales (usually for volume) are vertical. The process is the same. Most go up in increments or 'jumps' of 1, 2, 5, 10, 20, 25, 50, or 100.*

What is this scale going up in?

Answers on the next slide

Can I read scales?



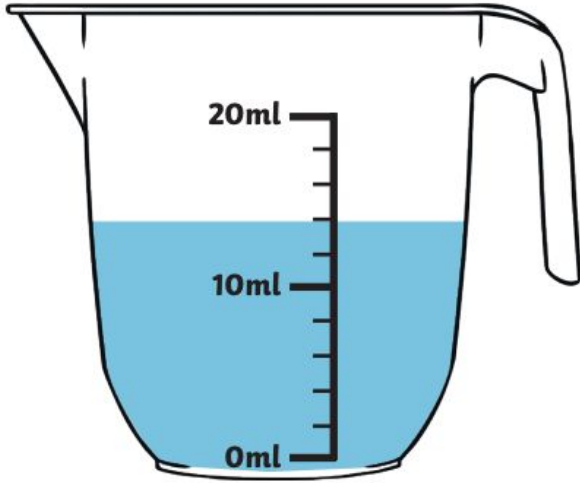
1) Some scales (usually for volume) are vertical. The process is the same. Most go up in increments or 'jumps' of 1, 2, 5, 10, 20, 25, 50, or 100.

2) *This scale is going up in 2's.*

How much water is in the measuring jug?

Answers on the next slide

Can I read scales?



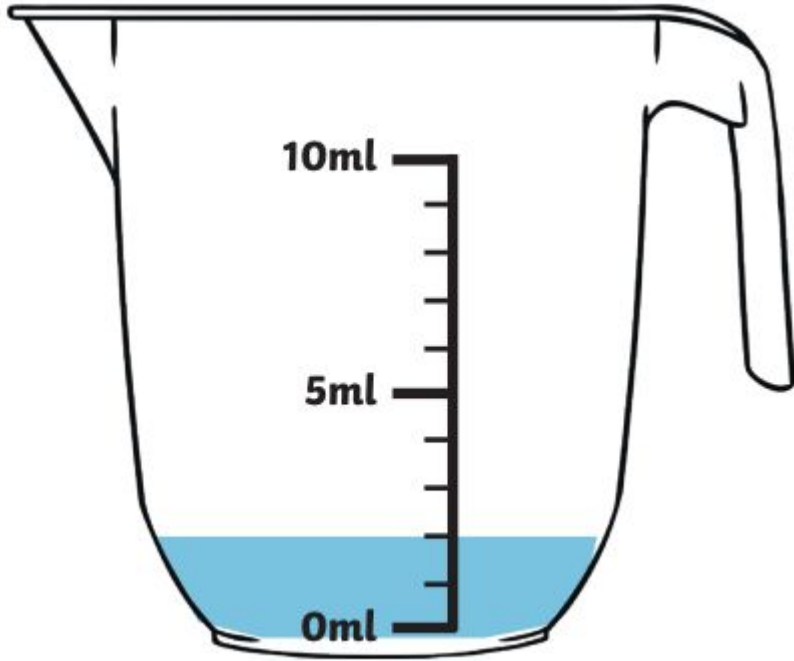
1) Some scales (usually for volume) are vertical. The process is the same. Most go up in increments or 'jumps' of 1, 2, 5, 10, 20, 25, 50, or 100.

2) *This scale is going up in 2's.*

How much water is in the measuring jug?

14ml

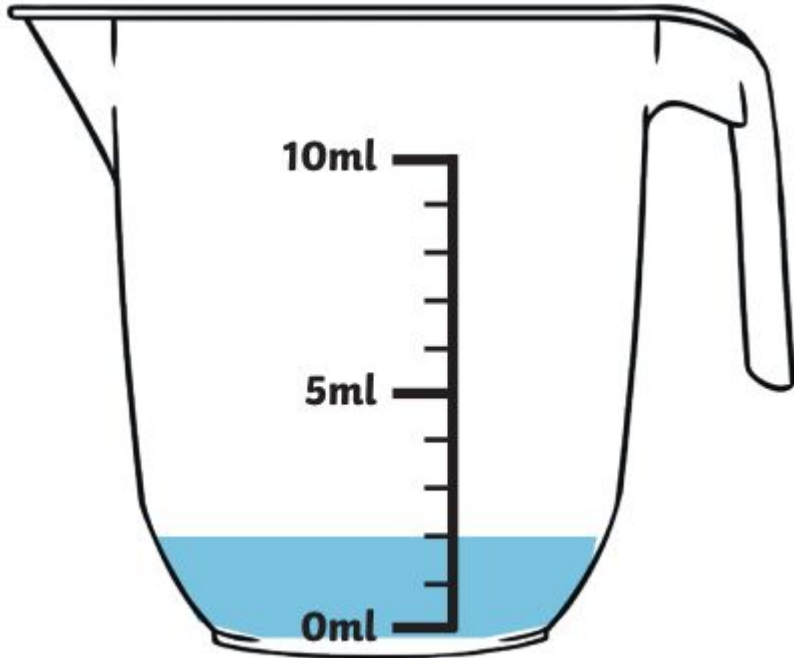
Can I read scales?



Now try this one, remember most scales go up in increments or 'jumps' of 1, 2, 5, 10, 20, 25, 50, or 100.

Answers on the next slide

Can I read scales?



Bonus challenge:

Ask your adults if you have any mechanical scales or measuring jugs at home. Can you figure out what the increments or 'jumps' on them are?

Now try this one, remember most scales go up in increments or 'jumps' of 1, 2, 5, 10, 20, 25, 50, or 100.

This scale is going up in jumps of 1.

There are 2ml of water in the jug.