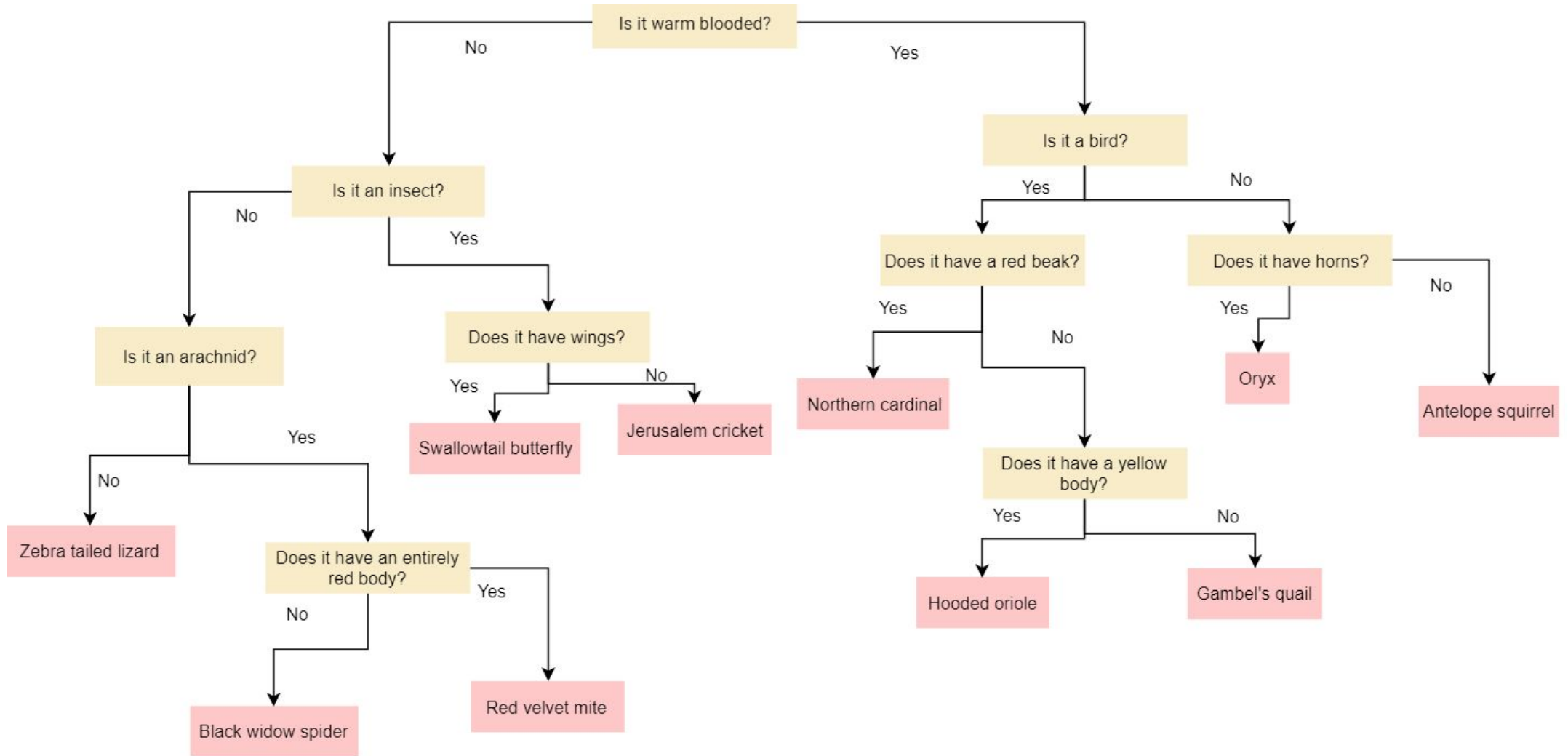


Desert animals - classification key



Red Challenge

Using the desert animal classification key can you identify the following animals from their pictures.

- 1) **Swallowtail Butterfly**
- 2) **Black widow spider**
- 3) **Oryx**
- 4) **Hooded oriole**

Yellow Challenge

Using the desert animal classification key can you identify the following animals from their pictures.

- 1) **Swallowtail Butterfly**
- 2) **Black widow spider**
- 3) **Hooded oriole**
- 4) **Zebra tailed lizard**
- 5) **Red velvet mite**

Green Challenge

Using the desert animal classification key can you identify the following animals from their pictures.

- 1) **Black widow spider**

- 2) **Red velvet mite**
- 3) **Hooded oriole**
- 4) **Oryx**
- 5) **Jerusalem cricket**
- 6) **Gambel's quail**