

Fast Five

Name these chocolate bars:

1)



4)



2)



5)



3)



Fast Five

Name these chocolate bars:

- 1) Snickers
- 2) Dairy Milk
- 3) KitKat
- 4) Crunchie
- 5) Lion bar

Can I design my own brand?

Designing your own brand

You completed the first two steps of your design last lesson, and today you will focus on the last two steps:

- Choose a name and logo
- Choose a type of chocolate
- **Choose a packaging design to match**
- **Draw your design**

The back of your bar

What things are on the back of a chocolate bar?



The back of your bar

- Barcode
- Weight
- Ingredients
- Best before date

INGREDIENTS: Sugar, butter (from **MILK**), white chocolate (16%) [sugar, cocoa butter, whole **MILK** powder, emulsifier, **SOYA** lecithin, natural vanilla flavouring], **CREAM** (14%), cookies (7%) [**WHEAT** flour, sugar, palm oil, rapeseed oil, fat reduced cocoa powder, wheat starch, glucose-fructose syrup, raising agents (potassium carbonates, ammonium carbonates, sodium carbonates), salt, emulsifiers (**SOYA** lecithin, sunflower lecithin) flavouring), preservative (E202)

Your ingredients

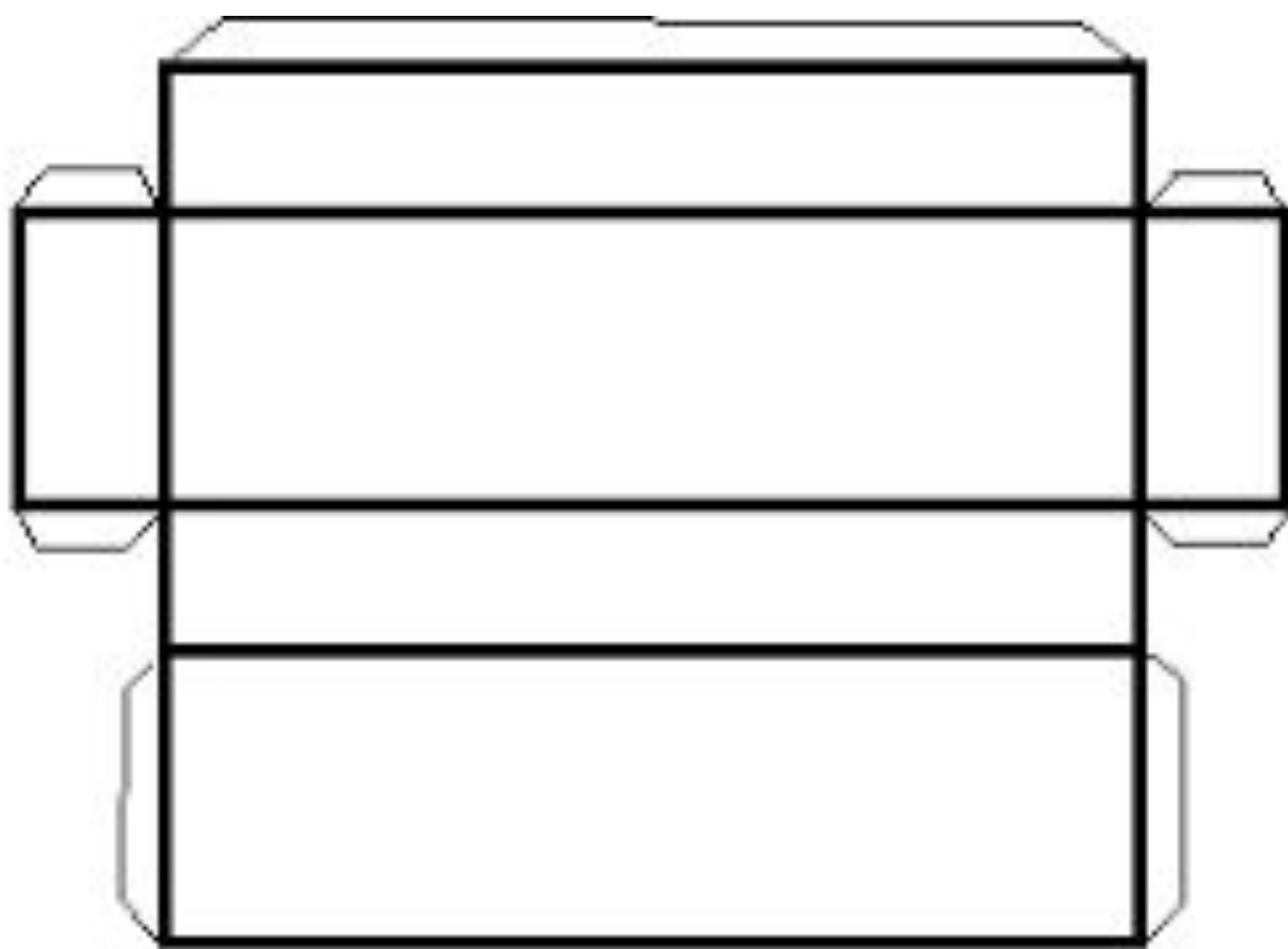
Have a quick think and write some ideas of ingredients you want to include in your chocolate bar

INGREDIENTS: Sugar, butter (from **MILK**), white chocolate (16%) [sugar, cocoa butter, whole **MILK** powder, emulsifier, **SOYA** lecithin, natural vanilla flavouring], **CREAM** (14%), cookies (7%) [**WHEAT** flour, sugar, palm oil, rapeseed oil, fat reduced cocoa powder, wheat starch, glucose-fructose syrup, raising agents (potassium carbonates, ammonium carbonates, sodium carbonates), salt, emulsifiers (**SOYA** lecithin, sunflower lecithin) flavouring), preservative (E202)

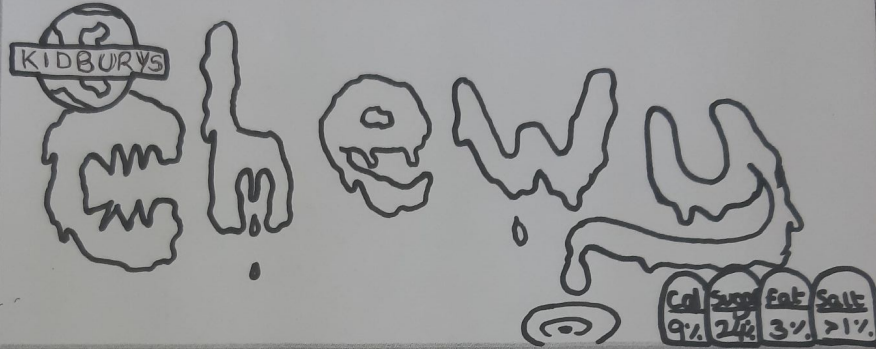
Nutrition Facts	
Serving Size: 1 Birthday Party	
Birthday Wishes	100%
Laughter	100%
Fun & Games	100%
Smiles	100%
Ingredients	
One Happy Birthday boy with lots of love and laughter to share with family & friends for his 6 th birthday party!	

Your design

The next slide shows an example of the things you should include in your design.



Get that 'Friyay feeling' with a chewy!



GLUE

GLUE

Front

Caves of goopy caramel and chewy toffee, wrapped in Kidbury's milk chocolate

INGREDIENTS: Caramel, sugar, toffee, unicorn tears, milk, flying marshmallows, glucose syrup, the love of an elf, cocoa solids, rainbow dust, natural flavourings.

Back

150g

BEST BEFORE: 01/01/2030



GLUE

Regular size
chocolate bar for
by TUMBLR

RED/YELLOW Can I design my own brand?

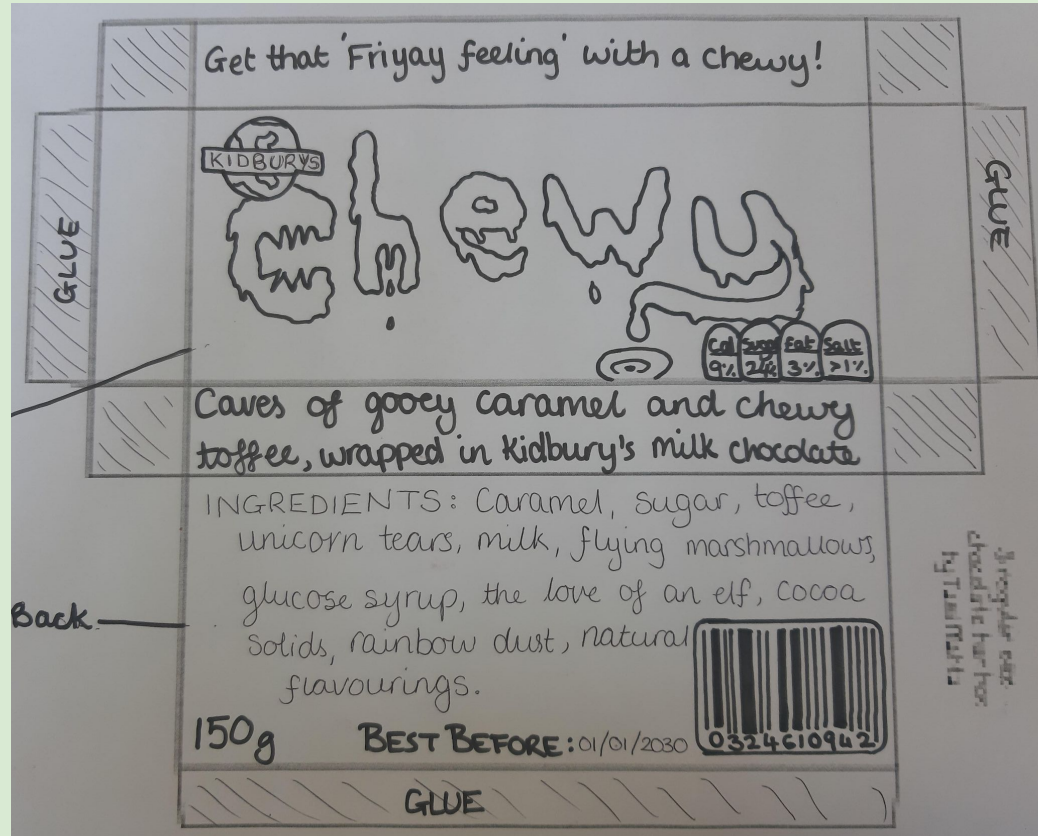
Draw your design on a cuboid net.

On the front, don't forget to include:

- Logo from last lesson
- Background
- Chocolate bar name

On the back, don't forget to include:

- Barcode
- Ingredients
- Weight
- Best before date



GREEN Can I design my own brand?

Draw your design on a cuboid net.
Make sure you think about how you will represent your flavour, and don't forget to include all the information on the front and back of your bar.

